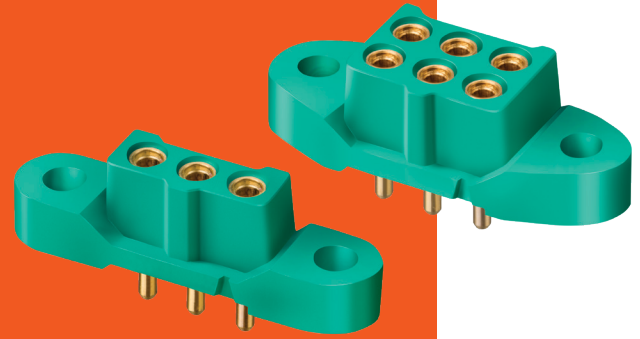


M300 Connectors

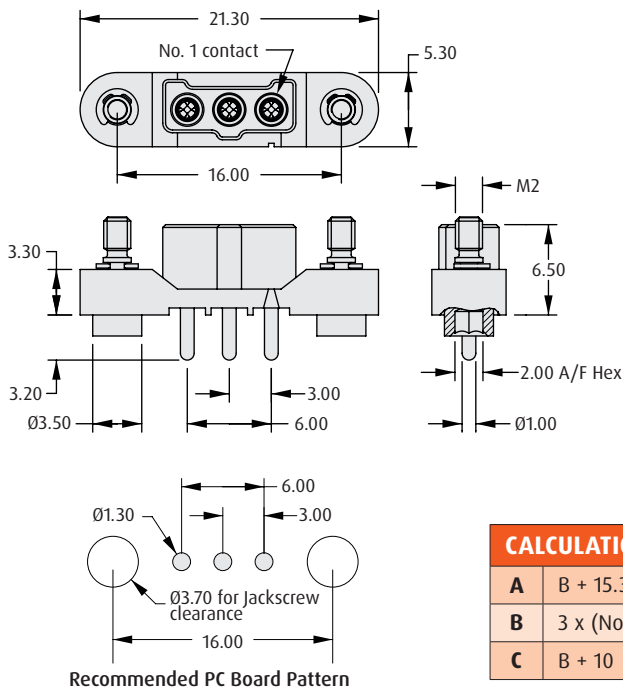
Female PC Tail

- ❖ 4-finger Beryllium Copper contact.
- ❖ Positive keyway polarisation features.
- ❖ 10A current capacity, resists high vibration and shock.
- ❖ Withstands extremes of temperature: -65°C to +175°C.
- ❖ Scoop-proof contacts.
- ❖ No. 1 position ident on housing.

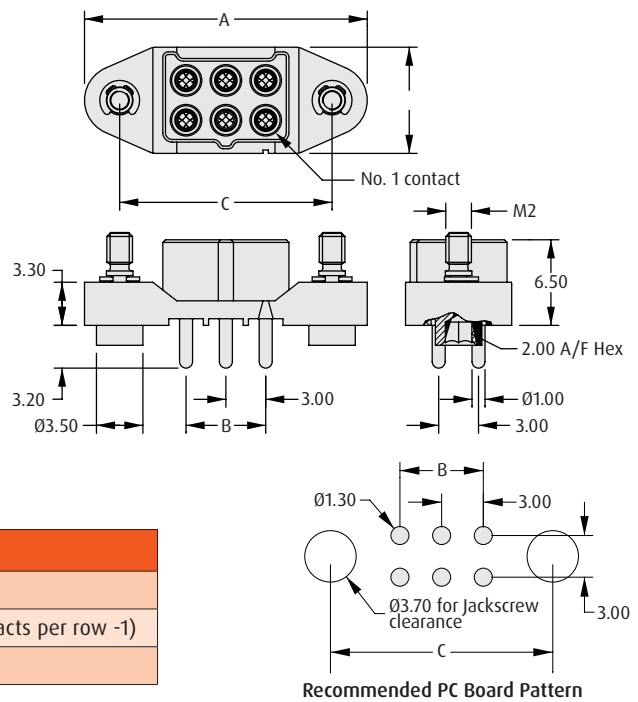


M300

SINGLE ROW



DOUBLE ROW



CALCULATION	
A	B + 15.3
B	3 x (No. of contacts per row -1)
C	B + 10

HOW TO ORDER

M300 - F VX XX 45 XX

SERIES CODE

GENDER

TYPE

TYPE	
00	No Jackscrew
F2	Hex Socket Jackscrew

FINISH	
45	Gold

TOTAL NO. OF CONTACTS	
03	Single Row
06, 10	Double Row

All dimensions in mm.