

PART NUMBER	REV	FIRST USED	TERMINATOR	FEED TYPE	DESCRIPTION
1339792-1	A		BENCH & LEADMAKER	MECH POST FEED	HD-I APPLICATOR
7-1339792-1	A		BENCH & LEADMAKER	MECH POST FEED	-1 AND SPARE PARTS
7-1339792-7	A		-	-	SPARE PARTS KIT

CRIMP DATA HONDA TRADING TERMINAL AMP CRIMP SPECS

TERMINAL NAME: 6.3 SERIES TYPE FASTON

CRIMP	SIZE	TYPE	RANGE
WIRE	2.29 [.090 IN]	F	0.50mm ² - 2.00mm ²
INSUL	3.94 [.155 IN]	F	1.70-3.70 [.067-.146 IN]
WIRE STRIP LENGTH		APPL INSTRUCTION	
4.70-5.50 [.185-.216 IN]		408-8323	

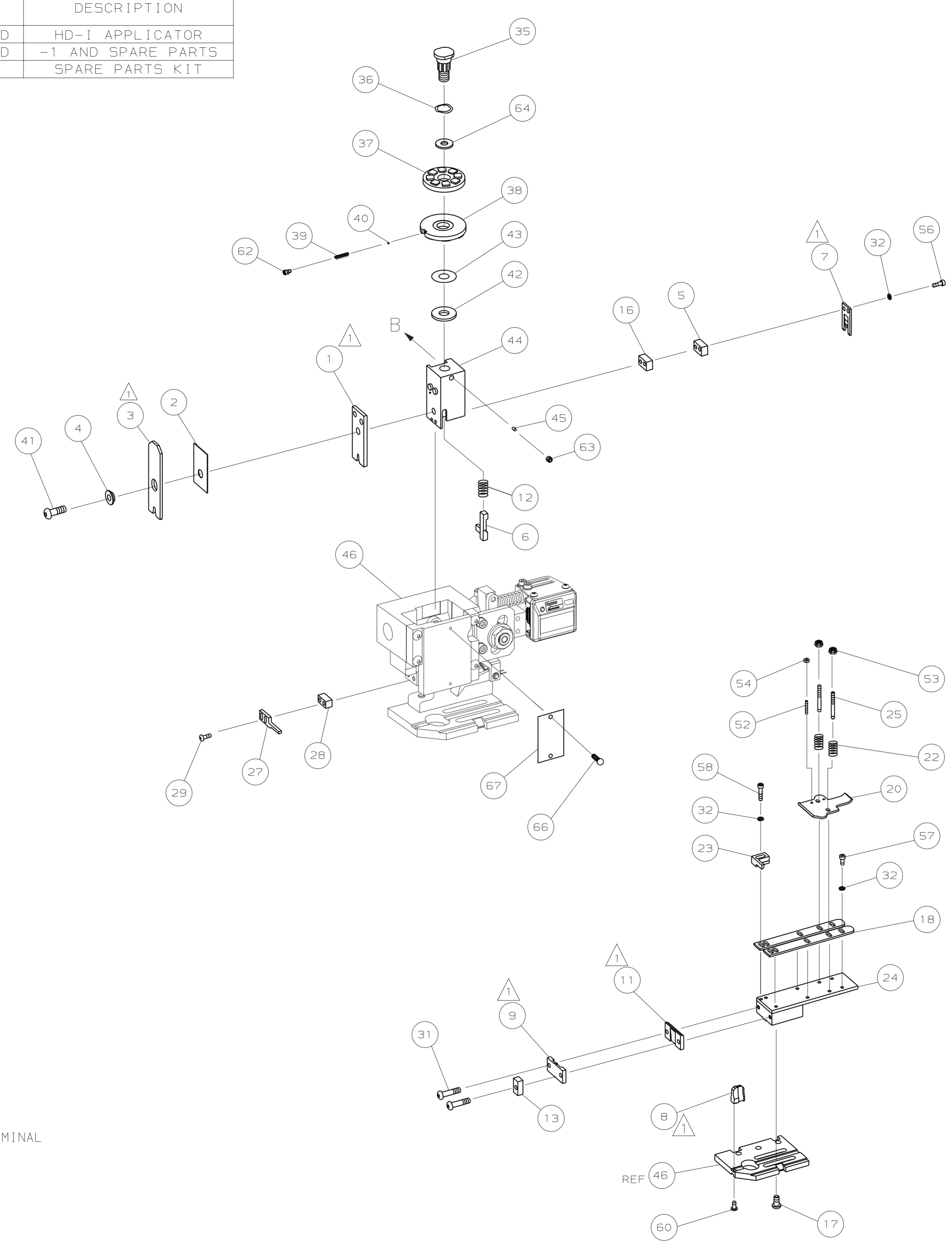
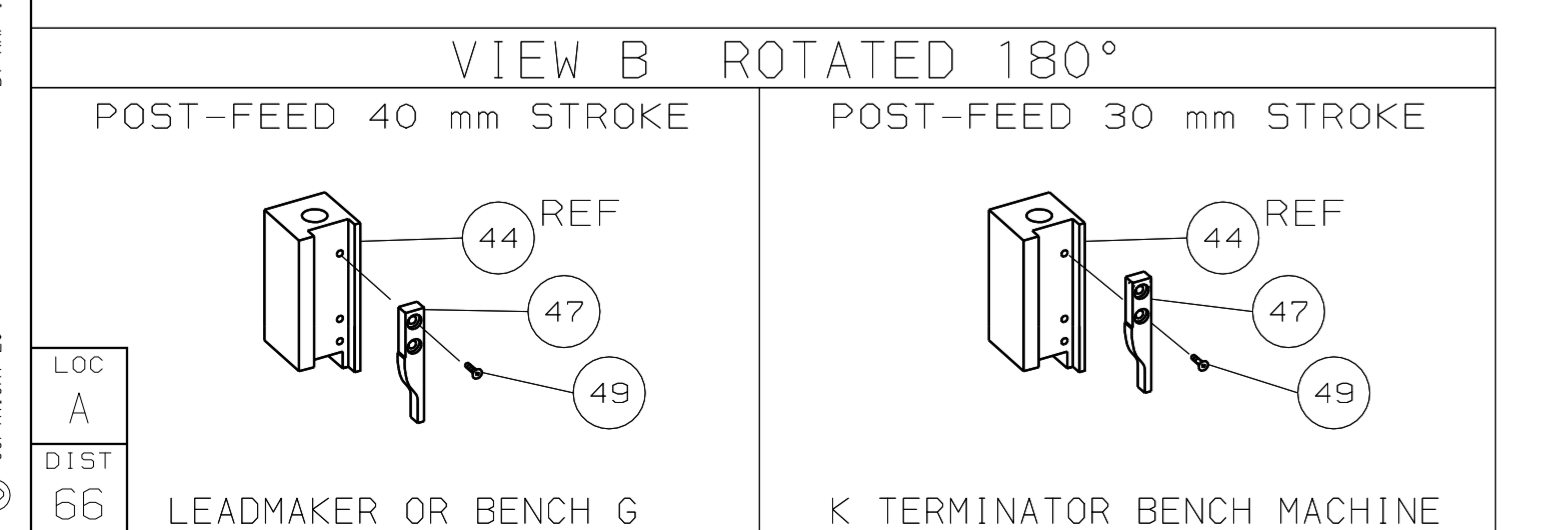
TERMINAL APPL SPEC	FEED
-	21.46 [.845 IN]

TERMINALS APPLIED

AMP PN	MFR PN			
1572837-1	8240-4182	-	-	-
1572837-2	8240-4140	-	-	-
-	-	-	-	-
-	-	-	-	-
-	-	-	-	-
-	-	-	-	-
-	-	-	-	-
-	-	-	-	-

WIRE SIZE	CRIMP HEIGHT	PIN PN AND LENGTH [IN]
2.00mm ²	1.88 ±0.05 [.074 ±.002 IN]	7-354778-3 [.2860]
1.50mm ²	1.70 ±0.05 [.067 ±.002 IN]	8-354778-9 [.2940]
1.00mm ²	1.52 ±0.05 [.060 ±.002 IN]	354779-5 [.3015]
0.75mm ²	1.42 ±0.05 [.056 ±.002 IN]	1-354779-3 [.3055]
0.50mm ²	1.35 ±0.05 [.053 ±.002 IN]	1-354779-9 [.3085]

- RECOMMENDED SPARE PARTS.
- GREASE RAM, CAM, CAM FOLLOWER AND FEED ROD LIGHTLY.
- LUBRICATE DAILY PER THE APPLICATOR INSTRUCTION SHEET SUPPLIED WITH THE APPLICATOR.
- ALL CRIMP DATA CALCULATED BY TYCO ELECTRONICS UK LTD.
- INSULATION RANGE SHOWN IS THAT OF THE APPLICATOR.
- 0.50MM² WIRE SIZE IS NOT RECOMMENDED FOR USE IN THIS TERMINAL BY TYCO ELECTRONICS UK LTD.



QTY	REV	PART NO	DESCRIPTION	ITEM NO		
-	1	1	1339792	PRINT, APPLICATOR LOG SHEET	73	
-	1	1	1338705-2	DOCUMENTATION PACKAGE	72	
					71	
					70	
					69	
					68	
-	1	1	461264-1	PLATE, IDENTIFICATION	67	
-	2	2	21017-2	SCR,DRIVE (#2X.19) ID PLATE	66	
					65	
-	1	1	986950-1	WASHER, FLAT PRECISION	64	
-	1	1	3-18031-0	SCR,SKT SET (M6X6) RAM	63	
-	1	1	18023-9	SCR,SKT CAP (M4X6) CP DSC	62	
					61	
-	1	1	18024-7	SCR,BHC (M4X10) ANVIL	60	
					59	
-	2	2	1-18023-3	SCR,SHC (M4X16) HOLD DOWN	58	
-	5	5	1-18023-0	SCR,SHC (M4X8) STRIP GUIDE	57	
-	2	2	9-18023-6	SCR,SHC (M4X14) SLUG BLADE	56	
					55	
-	2	2	18029-1	NUT, HEX (M3) DRAG	54	
-	2	2	986965-1	NUT, HEX SL (M4) DRAG STUD	53	
-	2	2	2-18032-2	SCR,SKT SET (M3X10) DRAG	52	
					51	
					50	
-	1	1	18024-3	SCR,BHC (M3X10) CAM	49	
					48	
-	1	1	1338676-1	CAM, POST-FEED 30 & 40 mm ST	47	
-	1	1	1338662-1	APPLICATOR, BASIC (SUBASSY)	46	
-	1	1	690191-1	PLUG, NYLON	45	
-	1	1	1320998-1	RAM	44	
-	1	1	690125-1	WASHER, LAMINATED	43	
-	1	1	690124-1	WASHER, RAM	42	
-	1	1	2-18024-6	SCREW,BHC (M8X25) CRIMPER	41	
-	1	1	23241-1	BALL, STEEL	40	
-	1	1	2-22278-7	SPRING, COMPRESSION	39	
-	1	1	1320922-1	DISC, INSULATION	38	
-	1	1	354777-1	WIRE DISC, PLASTIC	37	
-	1	1	22480-5	WASHER, SPRING	36	
-	1	1	690212-1	POST, RAM	35	
					34	
					33	
-	9	9	18025-2	WASHER, LOCK (M4) SHEAR BL	32	
-	2	2	1-18024-0	SCR,BHC (M4X20) SHEAR PL	31	
					30	
-	2	2	18024-8	SCR,BHC (M4X12) STRIPPER	29	
-	1	1	3-690451-2	SPACER, STRIPPER	28	
-	1	1	240639-1	STRIPPER	27	
					26	
-	2	2	1320906-1	DRAG, STUD	25	
-	1	1	1320995-1	PLATE, STRIP GUIDE	24	
-	1	1	240825-2	PLATE, STRIP HOLD DOWN	23	
-	2	2	4-22281-1	SPRING, DRAG	22	
					21	
-	1	1	1338665-1	DRAG, STOCK	20	
					19	
-	2	2	1338663-5	GUIDE, LOWER STRIP	18	
-	4	4	1-18024-8	SCR,BHC (M6X12) STRIP GD PL	17	
-	1	1	1338708-1	SPACER, SLUG BLADE	16	
					15	
					14	
-	1	1	690481-2	SPACER, HOLD DOWN	13	
-	1	1	23846-1	SPRING, HOLD DOWN	12	
-	1	1	240644-1	PLATE, REAR SHEAR	11	
					10	
-	1	1	690482-3	PLATE, FRONT SHEAR	9	
-	1	2	1	5-1333217-0	ANVIL	8
-	1	1	690474-3	BLADE, SLUG	7	
-	1	1	2-455892-1	HOLD DOWN, TERMINAL	6	
-	1	1	240641-4	SPACER, SLUG BLADE	5	
-	1	1	238009-1	SPACER, BLOCK CRIMPER	4	
-	1	2	1	1-1424909-0	CRIMPER, INSULATION	3
-	1	1	1	1-455888-0	SPACER, CRIMPER	2
-	1	2	1	1-456406-6	CRIMPER, WIRE	1

QTY REQD PER ASSY	PARTS LIST
	DIMENSIONS: mm [INCHES] MATL
	DO NOT SCALE PRINT.
	TOLERANCES UNLESS OTHERWISE SPECIFIED:
	1 PLC DEC ±
	2 PLC DEC ±
	3 PLC DEC ±
	ANGLES ±
	SURF TEXTURE: ✓
	REMOVE BURRS, BREAK SHARP EDGES RO.38 MAX
	DR L.OF THOUSE
	REL 15-12-05
	M.CLIFFORD
	M.CLIFFORD
	AMP Tyco Electronics Harrisburg, PA 17105-3808
	NAME END FEED HD-I APPLICATOR MACHINE REF HD-I APPL
	SCALE DWG NO 1339792 SHEET 1 OF 1 REV A
	CAGE CODE 00779 CUSTOMER AND ASSEMBLY DRAWING

THIS DRAWING IS A CONTROLLED DOCUMENT.

LAYOUT L1339792 SET UP GAGE 458638-3

RELEASED FOR PUBLICATION BY AMP INCORPORATED. ALL RIGHTS RESERVED. THIS DRAWING IS UNRELEASED. COPYRIGHT © 2006

1339792

D

C

B

A