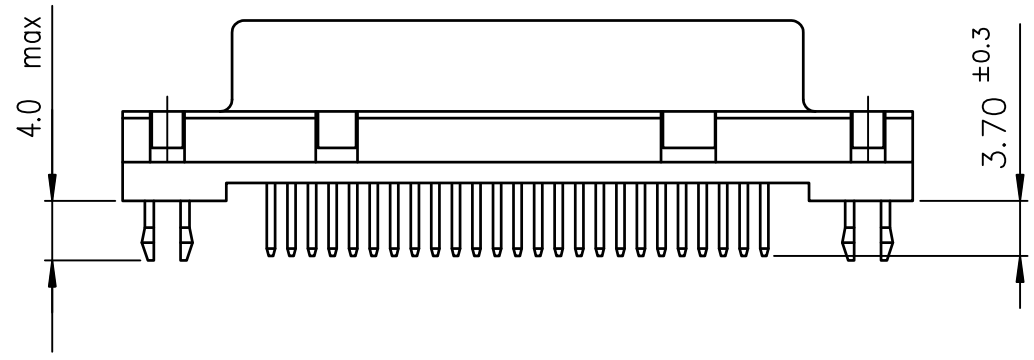
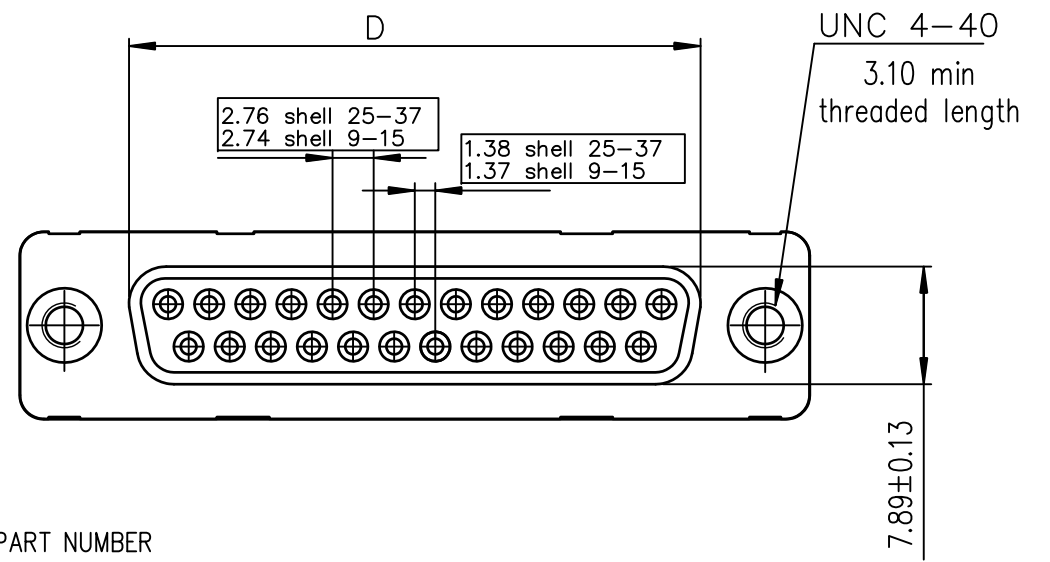
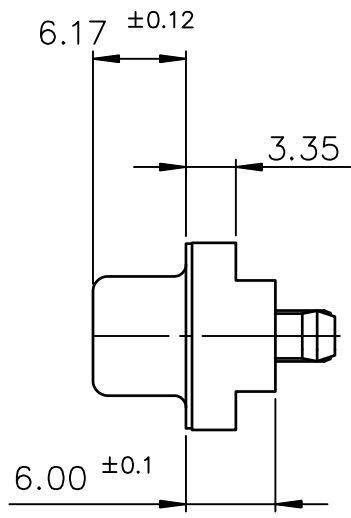
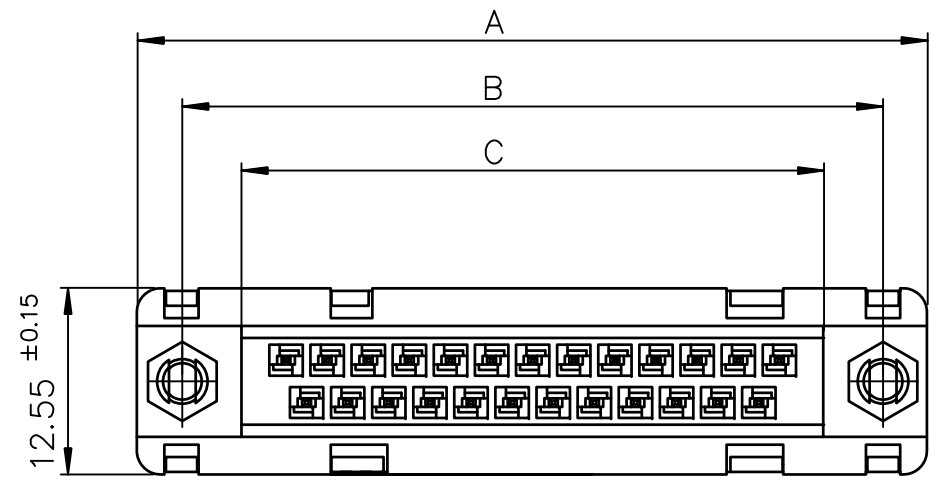


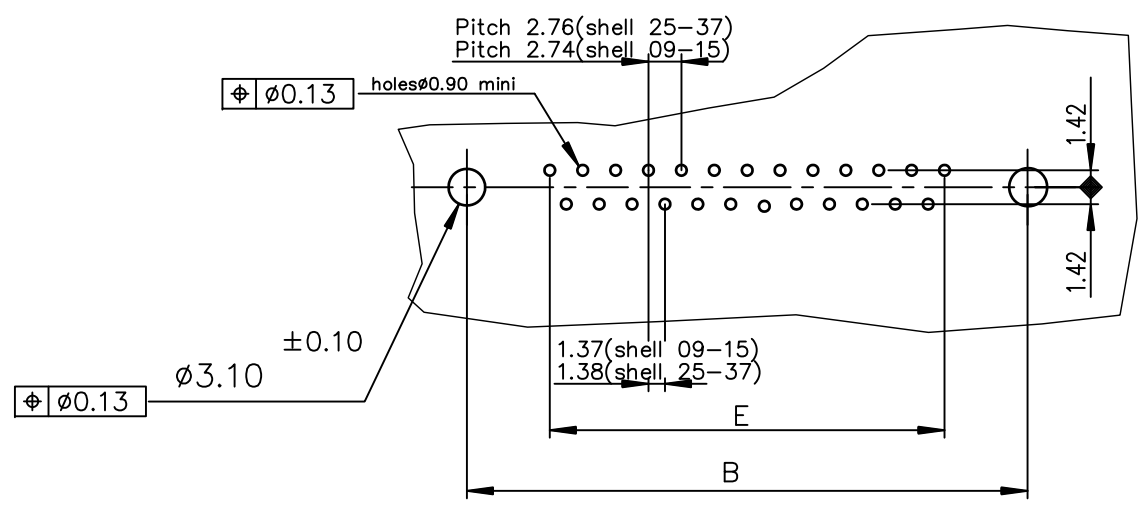


FCIconnect.com

Copyright FCI



PC card drilling dimensions(after plating)  
(thickness 2.40±0.20mm)



LEAD FREE PART NUMBER

SHELL	A±0.38	B±0.12	C±0.10	D±0.25	E±0.07	PART NUMBER
09	30.81	24.99	16.96	16.21	10.96	D09S24B.GX00LF
15	39.14	33.32	25.18	24.54	19.18	D15S24B.GX00LF
25	53.03	47.04	39.12	38.25	33.12	D25S24B.GX00LF
37	69.32	63.50	55.68	54.71	49.68	D37S24B.GX00LF

Protection: 4 --> Flash Au  
6 --> 0.76µ Au

GENERAL CHARACTERISTICS AND ROHS INFORMATIONS:  
SEE DRAWING C01-8646-0000

mat'l. code		surface		tolerance		projection		product family	
-		ISO 1302 ✓		ISO 406 ISO 1101				D-SUB	
ltr		ecn no		dr		date		title	
G		ELX-I21654		AB		2015-10-26		FEMALE DELTA-D STRAIGHT, SOLDER TYPE	
angles		linear		.0±0.1		MM		dwg no	
0°±2°				.00±0.1		scale 2:1		sheet 1 of 1	
				.000±0.1				size	
dr		LELEON		1992-09-16				C01-8646-0126	
enr		ALIAS BABU		2015-10-26				A3	
chr		MITHUN PAUL		2015-10-26					
appd		BIJU K PAUL		2015-10-26				type Product Customer Drawing	
sheet index		revision sheet		G		1			