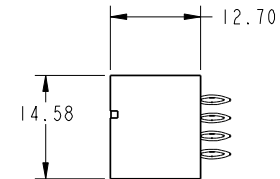
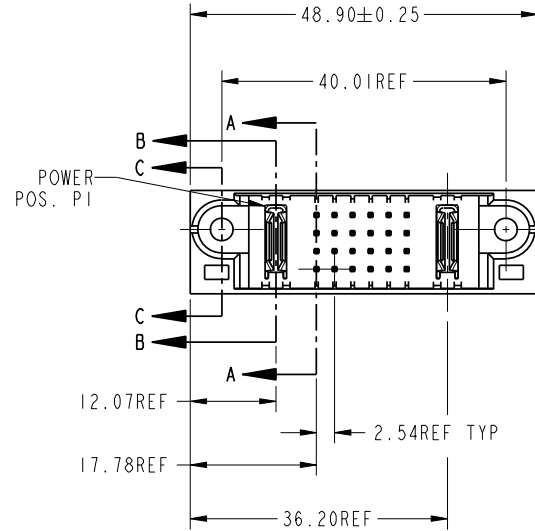
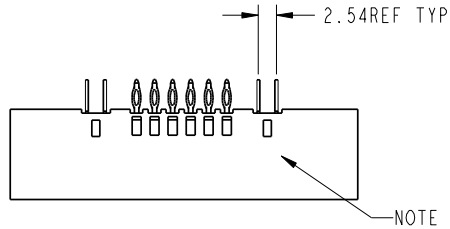


Tous droits strictement reserves. Reproduction ou communication a des tiers interdite sous quelque forme que ce soit sans autorisation écrite du propriétaire. Propriete de c FCI. Droits de reproduction FCI.



All rights strictly reserved. Reproduction or issue to third parties in any form whatever is not permitted without written authority from the proprietor. Property of FCI. Copyright FCI.

PRODUCT No.	ROWS	POWER		SIGNAL						POWER			
		E1	P1	1	2	3	4	5	6	P2	E2		
51952-002-- NOTE: 3	D C B A			G	G	G	G	G	G	G	G		



CODE	DIM "M" ±.010 [0.25]	CONTACT TYPE
G	[6.86]	SIGNAL
K	[5.59]	SIGNAL
PC	[N/A]	POWER

mat'l code				SEE NOTE		tolerances unless otherwise specified		CUSTOMER		FCI	
lir	ecn no.	dr	date	linear	0.X ±0.3	COPY		www.fciconnect.com		title	
A	V12513	DA1	10/31/01	0.XX ±0.13	projection		IP + 24S + IP		PRESS FIT VERTICAL HEADER		
B	V21104	TBA	10/01/02	0.XXX ±0.051	angles		0° ±2°		product family		
C	DG05-0472	Ryan	11/17/05	dr	J. WITMER	9/19/01	MM		PwrBlade		
D	DG07-0357	JULIA	09/10/07	enrg	J. ALLISON	9/19/01	scale		code		
				chr	J. ALLISON	9/19/01	1:1		size		213
				appd	J. ALLISON	9/19/01			dwg no		1 of 3
sheet index		revision sheet		D	D	D			A		51952-002
				I	I	I					

cage code 22526

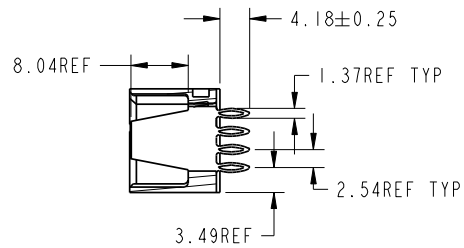
Pro/E

Tous droits strictement reserves. Reproduction ou communication a des tiers interdite sous quelque forme que ce soit sans autorisation écrite du propriétaire. Propriete de c FCI. Droits de reproduction FCI.

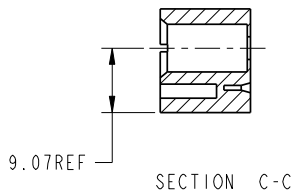


All rights strictly reserved. Reproduction or issue to third parties in any form whatever is not permitted without written authority from the proprietor. Property of FCI. Copyright FCI.

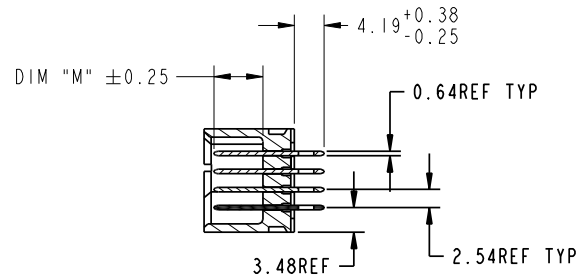
PRODUCT NUMBER
51952-002--
NOTE: 3



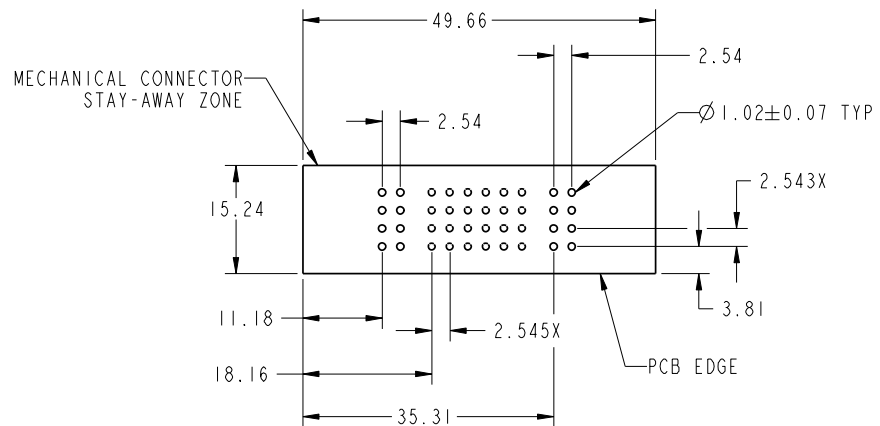
SECTION B-B



SECTION C-C



SECTION A-A



RECOMMENDED PCB LAYOUT

mat'l code				SEE NOTE		tolerances unless otherwise specified		CUSTOMER		FCI www.fciconnect.com		
lfr	ecr no.	dr	date	linear	0.X ±0.3	projection		COPY		title		
D				angles	0.XX ±0.13	MM		IP + 24S + IP		PRESS FIT VERTICAL HEADER		
				dr	0.XXX ±0.051	1:1		product family		code		
				enr	J. WITMER 9/19/01			PwrBlade		213		
				chr	J. ALLISON 9/19/01			size		sheet		
				appd	J. ALLISON 9/19/01			A		2		
sheet index	revision sheet											

cage code 22526

Pro/E

Tous droits strictement reserves. Reproduction ou communication a des tiers interdite sous quelque forme que ce soit sans autorisation écrite du propriétaire. Propriete de c FCI. Droits de reproduction FCI.



All rights strictly reserved. Reproduction or issue to third parties in any form whatever is not permitted without written authority from the proprietor. Property of FCI. Copyright FCI.

1 | 2

3 |

4

PRODUCT NUMBER
51952-002--
NOTE: 3

NOTES:

1. DIMENSIONS AND TOLERANCES ARE IN ACCORDANCE WITH ASME Y14.5M, 1994 UNLESS OTHERWISE SPECIFIED.

CONNECTOR NOTES:

- 2 HOUSING MATERIAL: UL 94 V-0 GLASS FILLED
HIGH-TEMP THERMOPLASTIC
POWER CONTACT MATERIAL: COPPER ALLOY
SIGNAL PIN MATERIAL: COPPER ALLOY
 - 3. PLATING:
51952-002 ,51952-002LF PLATING SPEC. WAS SHOWN IN THE PRINT OF 10064183.
 - 4 MANUFACTURER'S NAME, P/N, AND DATE CODE TO APPEAR ON THIS SURFACE.
 - 5. PRODUCT SPECIFICATION GS-12-149.
APPLICATION SPECIFICATION BUS-20-067.
 - 6. PACKAGED IN TRAYS.
- PCB NOTES:**
- 7. ALL HOLE DIAMETERS ARE FINISHED HOLE SIZE.
 - 8. MOUNTING HOLES, WHERE APPLICABLE, ARE UNPLATED.
 - 9 $\varnothing 1.151 \pm 0.025$ DRILLED HOLES PLATED WITH
0.008 MIN SnPb OR Sn OVER .001 [0.03]
TO 0.08 Cu PLATING TO ACHIEVE
 $\varnothing 1.02 \pm .07$ HOLE.
 - 10 "DIM XXX" TO BE DETERMINED BY THE CUSTOMER.
 - 11 CONNECTOR KEEP-OUT ZONE.
 - 12. FOR PRESS FIT APPLICATION USE FCI CAM TOOL 430169-XXX.

A

A

B

B

mat'l code				SEE NOTE		tolerances unless otherwise specified		CUSTOMER		FCI www.fciconnect.com	
lfr	ecn no.	dr	date	linear	0.X ± 0.3	COPY		projection		title	
D					0.XX ± 0.13					1P + 24S + 1P PRESS FIT VERTICAL HEADER	
				angles	0° ± 2°					product family PwrBlade code 213	
				dr	J. WITMER 9/19/01			scale		size A	
				enrg	J. ALLISON 9/19/01			1:1		dwg no 51952-002 sheet 3	
				chr	J. ALLISON 9/19/01						
				appd	J. ALLISON 9/19/01						
sheet index		revision sheet									

1 | 2

Pro/E

3 |

cage code 22526

4