

4

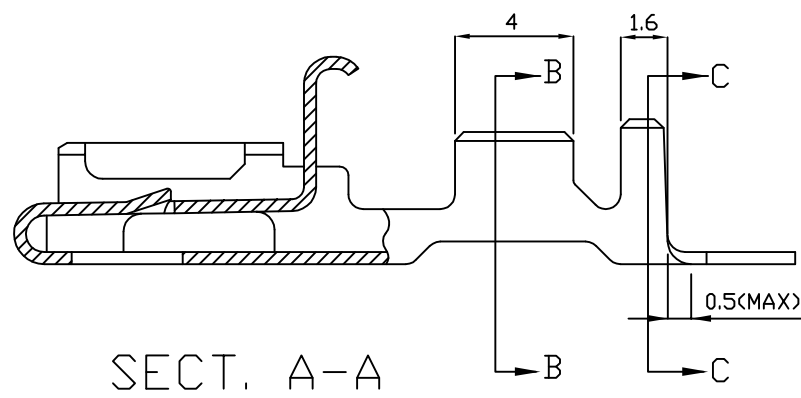
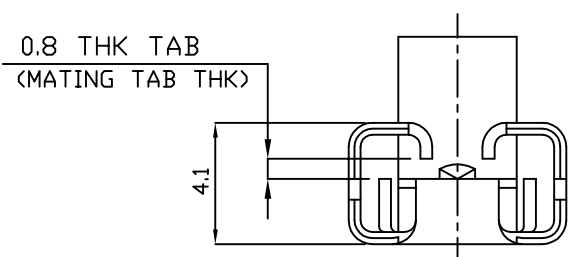
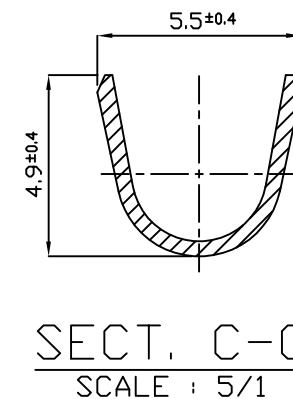
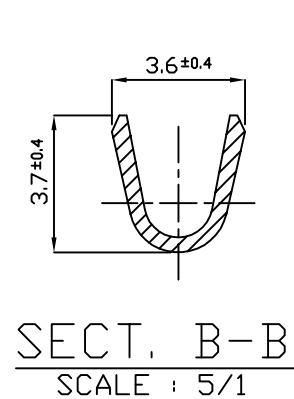
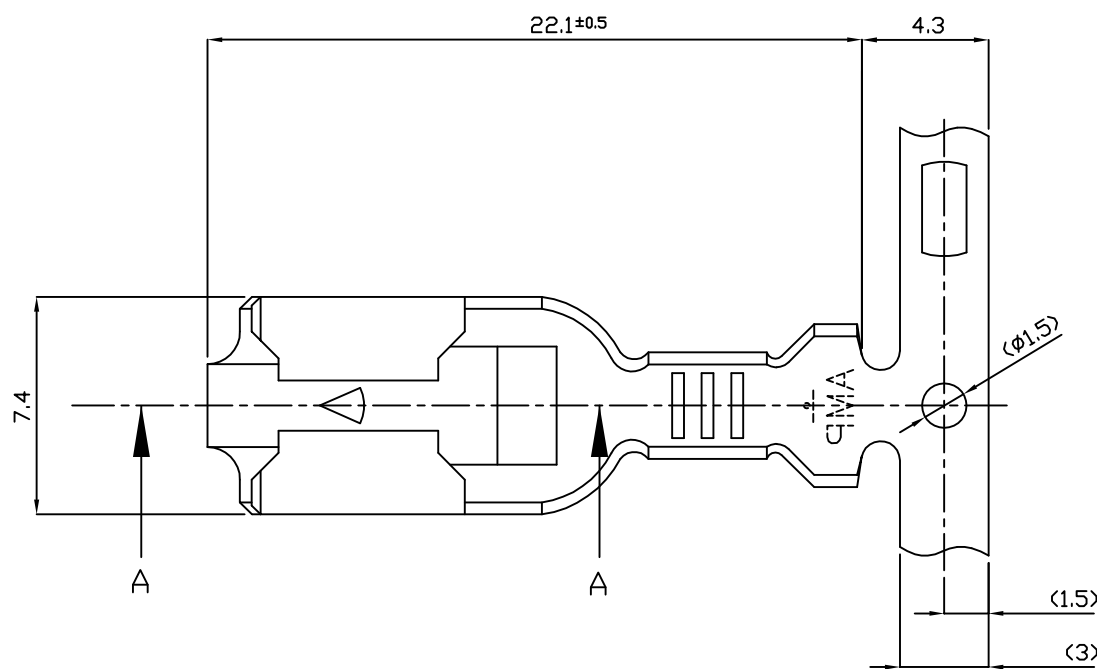
3

2

1

THIS DRAWING IS UNPUBLISHED. RELEASED FOR PUBLICATION
COPYRIGHT BY TYCO ELECTRONICS CORPORATION, ALL RIGHTS RESERVED.

LOC	DIST	REVISIONS					
		P	LTR	DESCRIPTION	DATE	DWN	APVD
DS	-		0	REDRAWN PER ECN P93-074	11.SEP.'93	YM	CS
			01	REVISED (ECR-10-022192)	28.OCT.'10	KT	HG



- NOTE;
1. APPLICABLE HSG PN: 171809, 171810, 171848, 154719
 2. APPL FEED: 20mm

PRE-TINNED	BRASS	85033-1
FINISH	MATERIAL	PART NO.

THIS DRAWING IS A CONTROLLED DOCUMENT FOR TYCO ELECTRONICS CORPORATION IT IS SUBJECT TO CHANGE AND THE CONTROLLING ENGINEERING ORGANIZATION SHOULD BE CONTACTED FOR THE LATEST REVISION.

DIMENSIONS: MM	TOLERANCES UNLESS OTHERWISE SPECIFIED:
	0 <XX<10 ± 0.2 10<XX<30 ± 0.25 30<XX<100 ± 0.3 ANGLES ± 3°
MATERIAL SEE TABLE	FINISH

DWN KT JUNG	TE Connectivity NAME 250 POSITIVE LOCK RECEP.			
CHK KT LIM				
APVD HG CHD				
PRODUCT SPEC -				
APPLICATION SPEC 114-61000-1	SIZE A3	CAGE CODE 00779	DRAWING NO C-85033	RESTRICTED TO -
WEIGHT -	CUSTOMER DRAWING			
SCALE 4/1		SHEET 1 OF 1	REV 01	