

## Test Procedure for the NCP3063 Buck – SOIC-8



7/31/2006

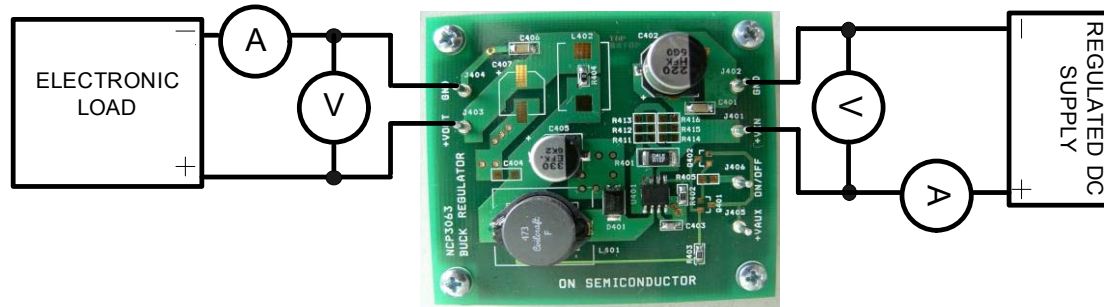


Figure1: Test Setup

Table 1: Required Equipment

Voltage Supply (12 V, 3 A)	Voltage Meter	Electronic Load or Current Source
----------------------------	---------------	-----------------------------------

### Test Procedure:

1. Connect the test setup as shown in Figure 2.
2. Apply an input voltage,  $V_{cc} = 12V$
3. Apply  $I_{out} = 0mA$  load.
4. Check that  $V_{out}$  is 3.3V (3.25V – 3.35V)
5. Increase  $I_{out}$  load to 800mA
6. Check that  $V_{out}$  is 3.3V (3.25V – 3.35V)
7. Power down the load
8. Power down  $V_{cc}$
9. End of test