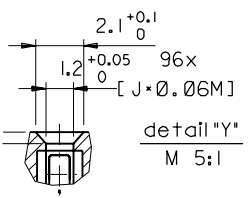
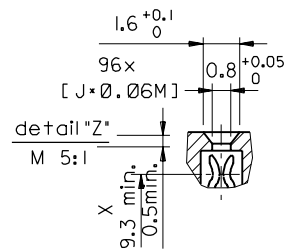
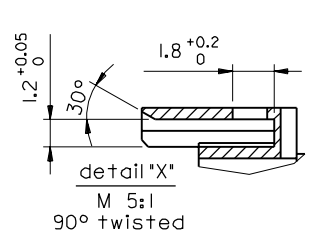
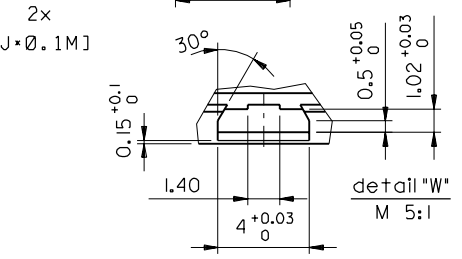
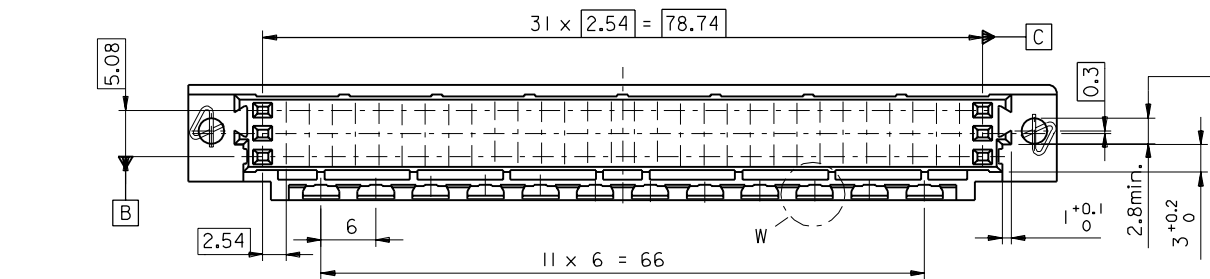
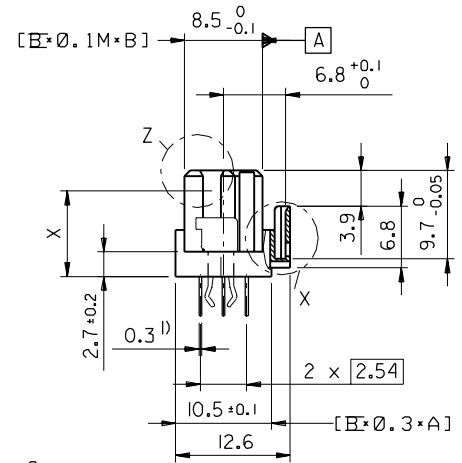
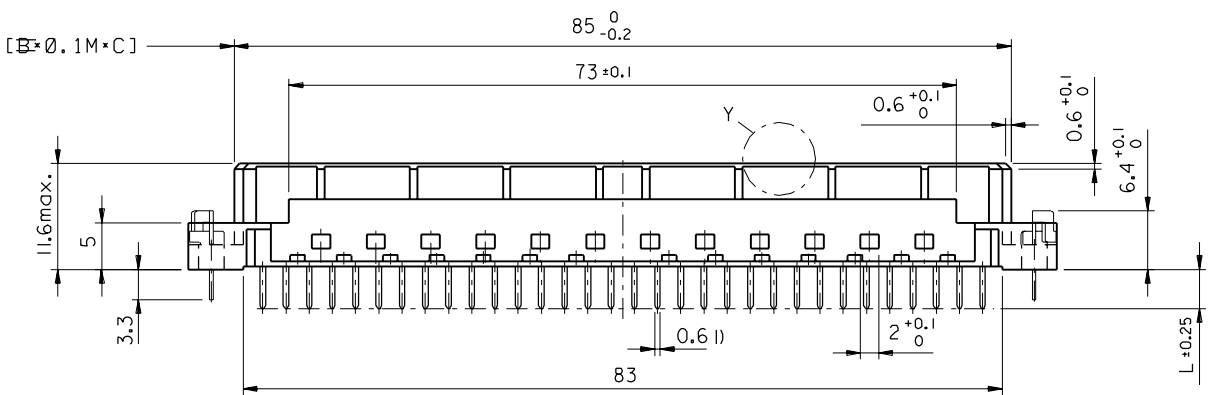


l) tails to fit in PC-board layout



FIRST ANGLE PROJECTION

REVISE ONLY ON CAD SYSTEM

ECN MG1998-2583 Schraege, Lochbild 97-09-17 KN	REVISIONS FOR PREVIOUS REVISIONS SEE MRI LIST
LTR	

UNLESS OTHERWISE SPECIFIED TOLERANCES: ANGULAR ±2°	
INCH	METRIC
3 PLACE ±	±
2 PLACE ±	±
1 PLACE ±	±
DRAFT WHERE APPLICABLE MUST REMAIN WITHIN DIMENSIONS	
DESIGN DIMENSION	<input checked="" type="checkbox"/> MM
EQUIVALENT DIMENSION	<input type="checkbox"/> IN.
IF TWO DIMENSIONS ARE SHOWN THE UPPER IS THE DESIGN DIMENSION, LOWER IS SECONDARY	

DRWG BY KN	SIGN
CHK'D BY Ca	SIGN
APP'D BY JB	SIGN
SCALE 2:1	

CAD/CAM PROJECT NAME 85042000 s12	THIS DRAWING CONTAINS INFORMATION THAT IS PROPRIETARY TO MOLEX INC. & SHOULD NOT BE USED WITHOUT WRITTEN PERMISSION	SH.	REV.
TITLE 96 pos. female connector DIN 41612 style C, + clip with coding, dimensions		SHEET NO. DATE 2 of 2 96/04/30	
MOLEX MOLEX EUROPE		PART NO. DWG NO. SIZE SDA-85042-0001 B	

VIEW ON MATING SIDE

A	A	A	A	A	A	A	A	A	A	A	A	A	A	A	A	A	A	A	A	A	A	A	A	A	A	A
⊃																										
A	A	A	A	A	A	A	A	A	A	A	A	A	A	A	A	A	A	A	A	A	A	A	A	A	A	A
⊂																										
A	A	A	A	A	A	A	A	A	A	A	A	A	A	A	A	A	A	A	A	A	A	A	A	A	A	A
⊄																										

1 2 3 4 5 6 7 8 9 10 11 12 13 14 15 16 17 18 19 20 21 22 23 24 25 26 27 28 29 30

A = 96 STANDARD CONTACTS L=4,5

Marking	Standard
Performance level	G2/0 = Contact area level2 / Termination tin
Flux proof	no
Fixing clip	no
Dimensions	SDA-85042-0001 sht.2
Technical Data	PS-85042-0001

A	G2/0 a1-32 b1-32 c1-32
Contact symbol	Perform. level Contact position number

first release see ECN No. 2154	REVISIONS		FOR PREVIOUS REVISIONS SEE MRI LIST	
	UNLESS OTHERWISE SPECIFIED TOLERANCES: ANGULAR ±2° INCH METRIC		DRWG BY	SIGN
	3 PLACE ± .	±	Cc	
	2 PLACE ± .	±	CHK'D BY	SIGN
	1 PLACE ± .	±	KN	
	DRAFT WHERE APPLICABLE MUST REMAIN WITHIN DIMENSIONS		APP'D BY	SIGN
	DESIGN DIMENSION <input type="checkbox"/> MM <input type="checkbox"/> IN.			
	EQUIVALENT DIMENSION <input type="checkbox"/> MM <input type="checkbox"/> IN.			
	IF TWO DIMENSIONS ARE SHOWN, THE UPPER IS THE DESIGN DIMENSION, LOWER IS SECONDARY			
LTR	MOLEX® MOLEX EUROPE		SCALE	
	PART NO. 85042-0282			
	DWG NO. SDA-85042-0282			
	SHEET NO. 1 OF 1		DATE 96/05/24	
	SIZE		A	

REVISE ONLY ON CAD SYSTEM		SH. REV.
CAD/CAM PROJECT NAME		THIS DRAWING CONTAINS PROPRIETARY TO MOLEX INC. & SHOULD NOT BE USED WITHOUT WRITTEN PERMISSION
s8504202		s81
TITLE		
96 pos. female connector acc. DIN 41612 style C contacts arrangement		
MOLEX® MOLEX EUROPE		SHEET NO. DATE
PART NO. 85042-0282		1 OF 1 96/05/24
DWG NO. SDA-85042-0282		SIZE
		A