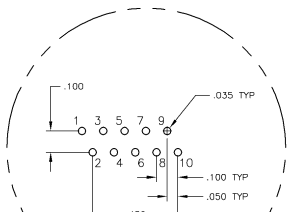
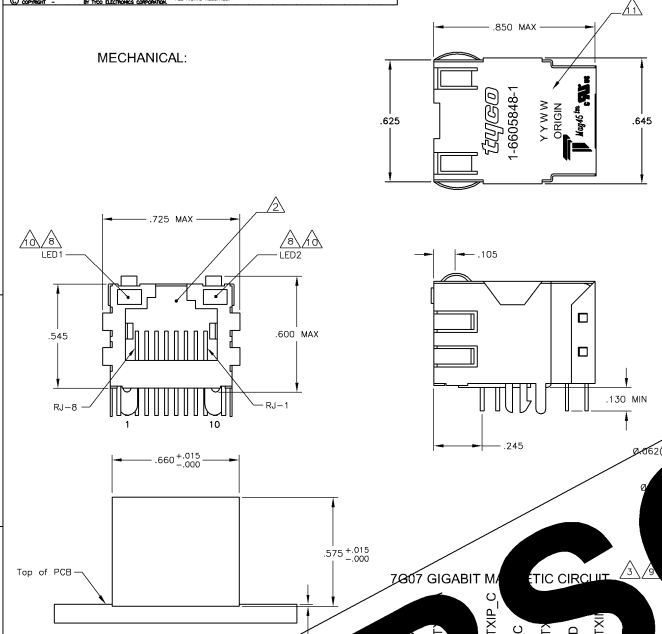
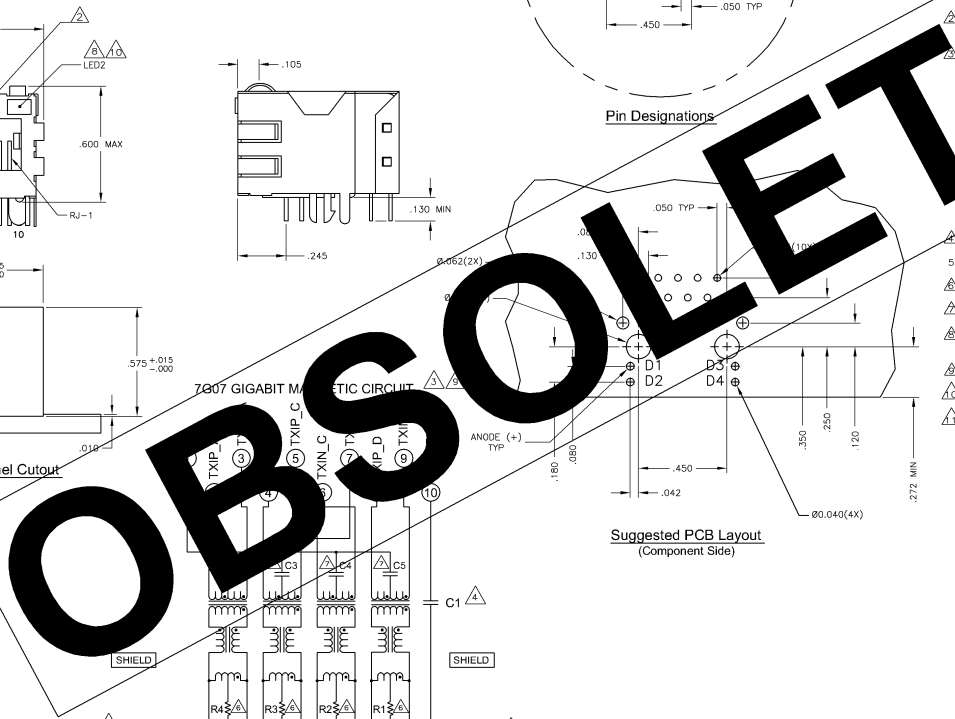


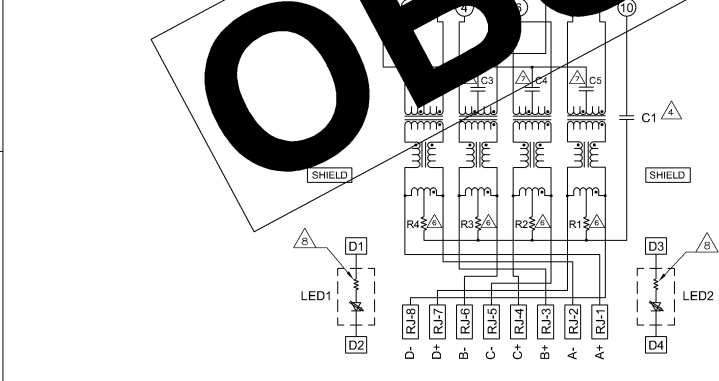
MECHANICAL:



- MATERIALS**
- HOUSING - THERMOPLASTIC PET POLYESTER FLAMMABILITY RATING UL 94V-0
 - SHIELD - .010" THICK C26800 BRASS PREPLATED WITH 30µINCH MIN SEMI-BRIGHT NICKEL. SOLDER TABS POST DIPPED WITH 100µINCH MIN SAC SOLDER
 - MOD JACK CONTACTS - .040" x 0.018" PHOSPHOR BRONZE, 50µINCH MIN OVERALL NICKEL UNDERPLATE, WITH SELECT 50µINCH MIN HARD GOLD FINISH PLATE
 - SOLDERTAILS WITH 100µINCH MIN MATTE TIN AND/OR SAC SOLDER DIP
 - LIGHT EMITTING DIODE (LED) - DIFFUSED EPOXY LENS, .020" x .020" CARBON STEEL WIREFRAME LEADS, PLATED WITH 80µINCH SILVER OVER 40µINCH NICKEL UNDERPLATE, 100µINCH COPPER UNDERPLATE, POST-PLATED WITH 100µINCH MATTE TIN AND/OR SAC SOLDER DIP OR PURE TIN SOLDER DIP
- PERFORMANCE**
- ISOLATION VOLTAGE CONFORMS TO FCC RULES AND REGULATIONS PART 68, SUBPART B, SECTION 15.02
 - MAXIMUM TEMPERATURES
 - TURN ON (CHIP CABLE) 11 ALL LEAD PAIRS
 - OPEN CIRCUIT INDUCTANCE (100µINCH MIN @ 100MHz, 0.1VRMS, 8mADC, 100µM GFC, 100µM GFC) FOUR PAIRS
 - ALL FOUR PAIRS
 - PERFORMANCE
 - INSERTION LOSS (CABLE) 11dB MAX FROM 0.5MHz TO 100MHz
 - RETURN LOSS (CABLE) 18dB MIN FROM 0.5MHz TO 40MHz
 - CROSSTALK ATTENUATION 35dB MIN FROM 0.5MHz TO 100MHz
 - CROSSTALK REJECTION RATIO (CMRR) 30dB MIN FROM 0.5MHz TO 100MHz
 - COMMON MODE REJECTION RATIO (CMRR) 30dB MIN FROM 0.5MHz TO 100MHz
 - ISOLATION VOLTAGE (COMPLIES WITH IEEE802.3 2002, PARA 4.0.6.1, ITEM a or b)
- OPERATING TEMPERATURE FROM 0° - +70°C**
- R1-R4 = 75 OHMS, 1/16 W, 5% RESISTORS
 - C2-C5 = 0.1µF, 50V CAPACITORS
 - LED COMPLIANT WITH IEC60825-1 SAFETY OF LASER PRODUCTS, WHEN OPERATED UP TO 20 mA. THE 250 OHM RESISTOR IS INCLUDED IN THE LEADS.
 - THE MAGNETICS ARE SYMMETRIC, AND SUPPORT AUTO-MOD/MIX
 - LED PEAK WAVELENGTH (GREEN1) = 565nm
 - TRADEMARK, PART NUMBER, DATE CODE, COUNTRY OF ORIGIN AND AGENCY APPROVAL MARKING IN APPROXIMATE LOCATION SHOWN



Suggested Panel Cutout



THIS DRAWING IS A CONTROLLED DOCUMENT	REVISIONS	DATE	DESCRIPTION	BY	CHK	APP
	AA	22	REVISIONS			
	B		REV PER ECO-08-028276			

GREEN	GREEN	1-6605848-1
LED1	LED2	PART NUMBER
Type Description Organization Horseshoe PA 17199-3008		
1X1 MAG45(TM), MODULAR JACK, 702 SCHEMATIC		
7007 GIGABIT MAGNETIC CIRCUIT (10 PIN), SHIELDED,		
DECOUPLING CAPACITOR, WITH RESISTOR LEADS		
SEE USE CASE TABLE 10		
REVISIONS TO		
A1 00779 6605848		
CUSTOMER DRAWING		

OBSOLETE