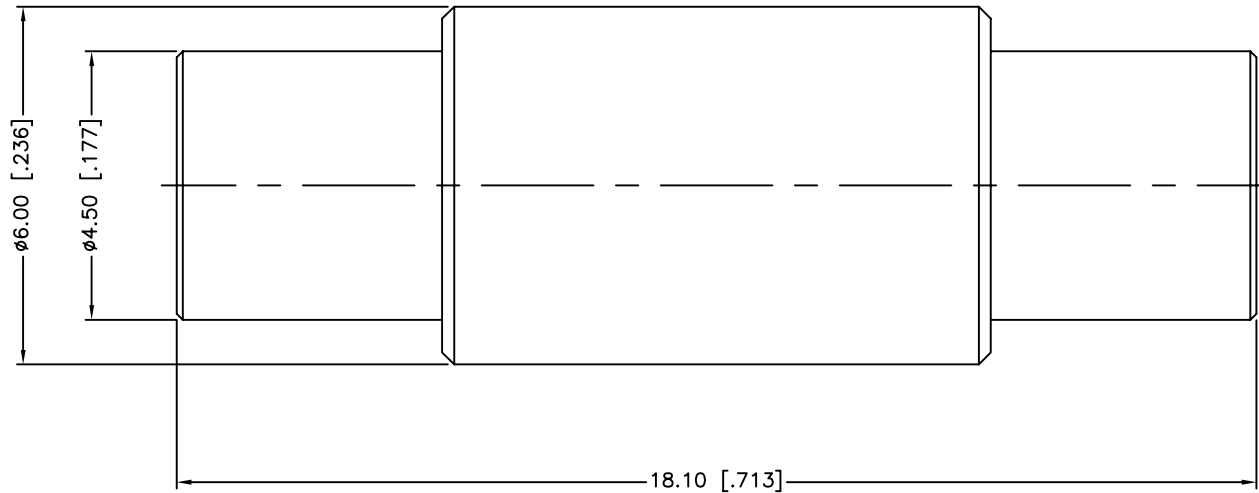


REV.	DATE	ECR NO.	DESCRIPTION
NC	06/15/10	XXXXXX	INITIAL RELEASE



1. FREQUENCY RANGE: DC 0-2.5 GHz
2. DIELECTRIC WITHSTANDING VOLTAGE: 500 VRMS, MIN.

<small>UNLESS OTHERWISE SPECIFIED DIMENSIONS ARE IN MILLIMETERS. DIMENSIONS IN [] ARE IN INCHES AND FOR CUSTOMER REFERENCE ONLY.</small> <small>UNLESS OTHERWISE SPECIFIED TOLERANCES FOR MILLIMETERS ARE:</small> 0.5 - 8mm \pm 0.20mm 8 - 30mm \pm 0.40mm 30 - 120mm \pm 0.50mm <small>UNLESS OTHERWISE SPECIFIED TOLERANCES FOR INCHES ARE:</small> .020 - .315 \pm 0.007" .315 - 1.180 \pm 0.015" 1.180 - 4.724 \pm 0.020" DO NOT SCALE DRAWING				APPROVALS	DATE	<h1 style="color: blue;">Amphenol Connex</h1>				
				DRAWN	M.ZHANG				06/15/10	
3 CONTACT PIN				CHECKED		PART DESCRIPTION				
2 INSULATOR				ISSUED		MCX JACK TO JACK ADAPTOR - 75 ohm				
1 BODY				SHEET		PART NO.				
				1 OF 1		252169-75				
DESCRIPTION				CAD FILE		DWG. NO.		REV.	SIZE	SCALE
MATERIAL				C:/CONNEX/252169-75.DWG		252169-75.DWG		NC	A	NA
FINISH										
QTY										