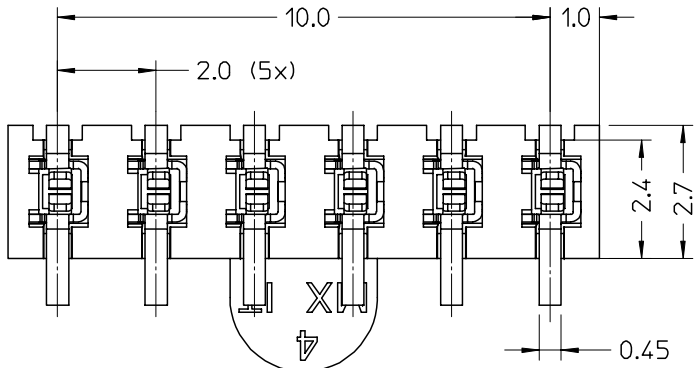
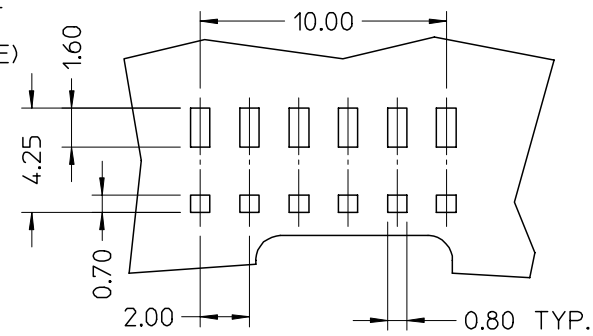


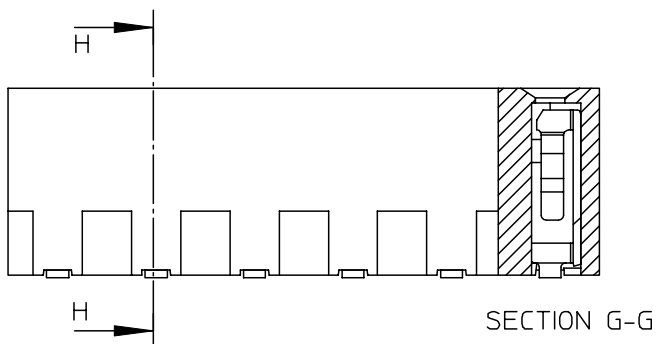
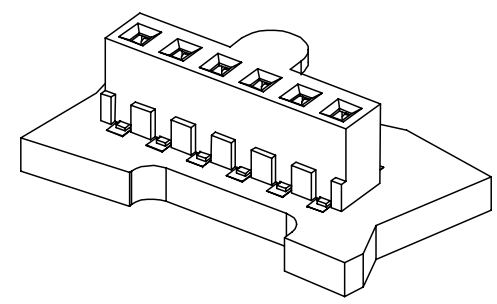
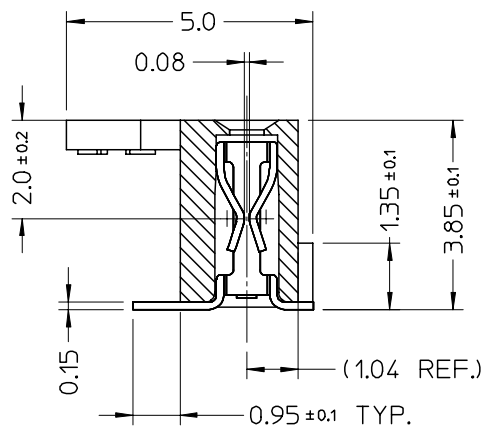
10 9 8 7 6 5 4 3 2 1



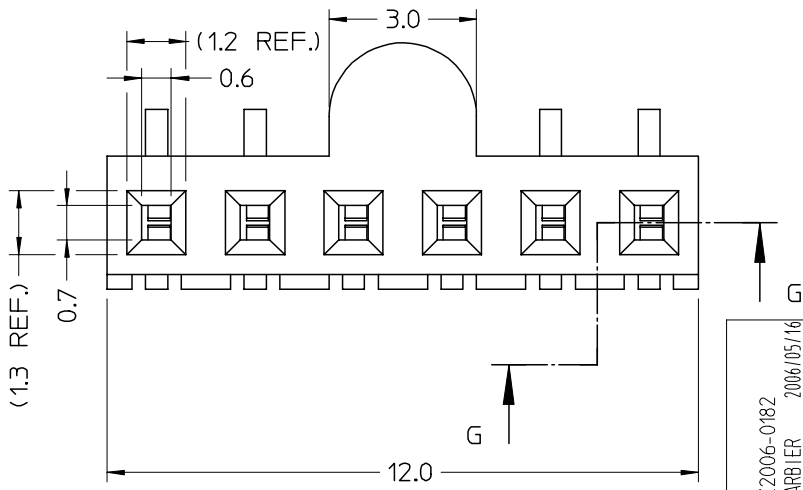
RECOMMENDED PCB LAYOUT  
(VIEW FROM COMPONENT SIDE)  
SCALE 5:1



SECTION H-H



SECTION G-G



- NOTES
- MATERIALS:
    - HOUSING: BLACK PA 46, 30 % GF, UL 94 V0
    - TERMINALS: 4 um PRETINNED PhBz
  - SMT LEADS COPLANARITY: 0.15 mm MAX
  - PACKAGING: IN TAPE & REEL
  - SPQ: 16800 pcs/BOX (2400 pcs/REEL - 7 REELS/BOX)
  - PRODUCT CHARACTERISTICS: ACCORDING TO PS 94103-005

Std. Descr.: SIP SOCKET SMT 6 CKT

EC NO: Z2006-0182 DRWN: SBARBIER 2006/05/16 CHKD: RSANDANO 2006/05/16 APPR: FBI SELLO 2006/05/16	QUALITY SYMBOLS ▽=0 ▽C=0	GENERAL TOLERANCES (UNLESS SPECIFIED)		DIMENSION STYLE	SCALE	DESIGN UNITS	FIRST ANGLE PROJECTION	
				MM ONLY	10:1	METRIC		
		mm	INCH	DRAWN BY DATE				
		4 PLACES ± ---	± ---	SBARBIER 1999/04/20				
		CHECKED BY DATE						
		SSORATO 1999/04/20						
		APPROVED BY DATE						
		RMARTUCC 1999/04/20						
		MATERIAL NO.						
		94103-5006						
		DOCUMENT NO.						
		SD-94103-004						
		SHEET NO.						
		1 OF 1						

6 CKT SIP SOCKET  
SMT VERSION

**MOLEX INCORPORATED**

DRAFT WHERE APPLICABLE MUST REMAIN WITHIN DIMENSIONS

THIS DRAWING CONTAINS INFORMATION THAT IS PROPRIETARY TO MOLEX INCORPORATED AND SHOULD NOT BE USED WITHOUT WRITTEN PERMISSION

9 8 7 6 5 4 3 2 1