

PART NUMBER	REV	FIRST USED	TERMINATOR	FEED TYPE	DESCRIPTION
1528401-1	A	-	LEADMAKER	MECH POST FEED	CUTS CARRIER
1528401-2	A	-	BENCH	MECH PRE FEED	CUTS CARRIER
1528401-6	A	-	LEADMAKER	MECH POST FEED	CONTINUOUS CARRIER
7-1528401-1	A	-	LEADMAKER	MECH POST FEED	-1 AND SPARE PARTS
7-1528401-2	A	-	BENCH	MECH PRE FEED	-2 AND SPARE PARTS
7-1528401-6	A	-	LEADMAKER	MECH POST FEED	-6 AND SPARE PARTS
7-1528401-7	A	-	-	-	SPARE PARTS KIT

CRIMP DATA AMP TERMINAL AMP CRIMP SPECS

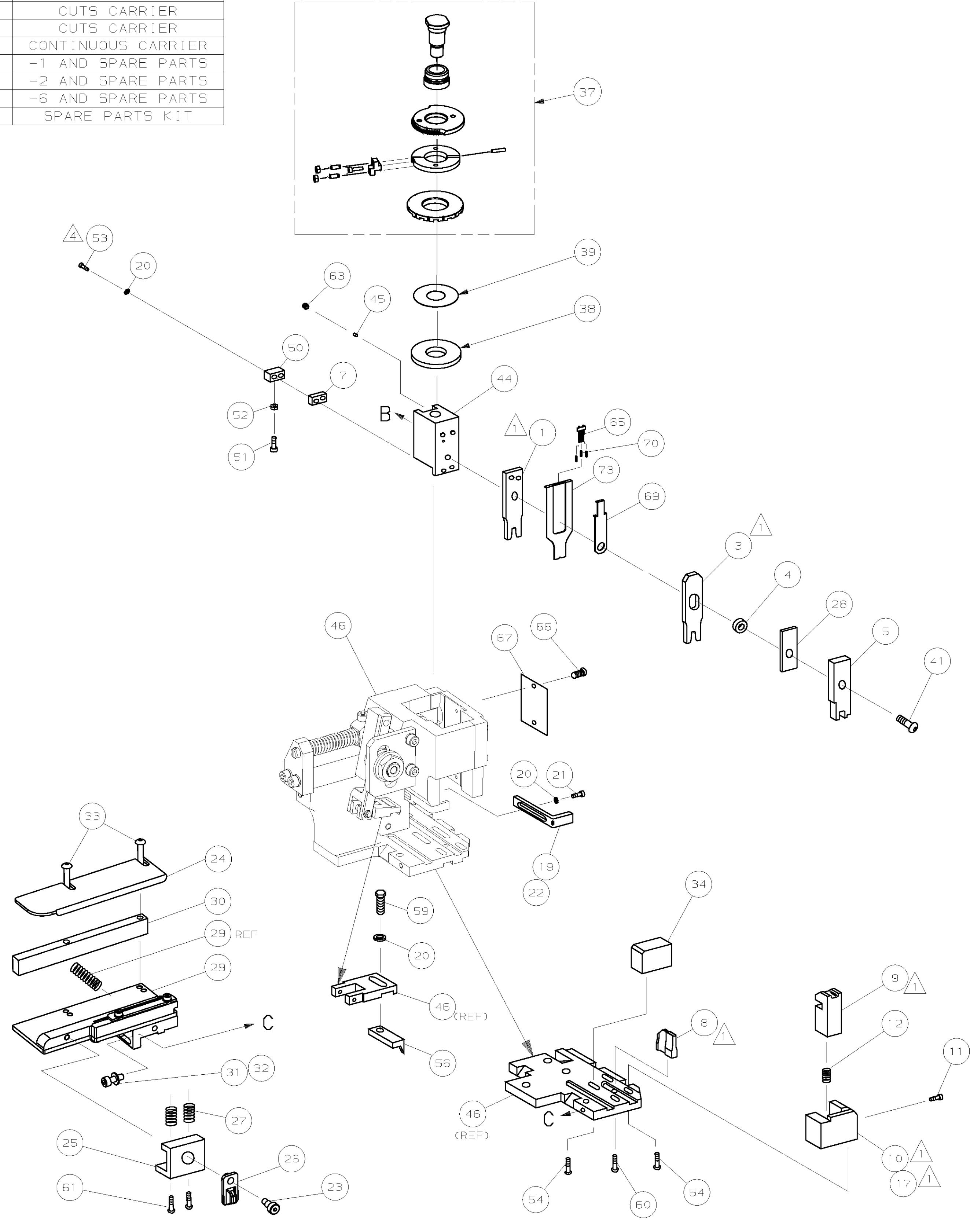
TERMINAL NAME: PIN / SKT ASSY, .062, TYPE III+

CRIMP	SIZE	TYPE	RANGE
WIRE	1.57 [.062 IN]	F	30-26 AWG
INSUL	1.78 [.070 IN]	0	1.02-1.52 [.040-.060 IN]
WIRE STRIP LENGTH	APPL INSTRUCTION		
3.58-4.34 [.141-.171 IN]	408-8322 & 408-8490		

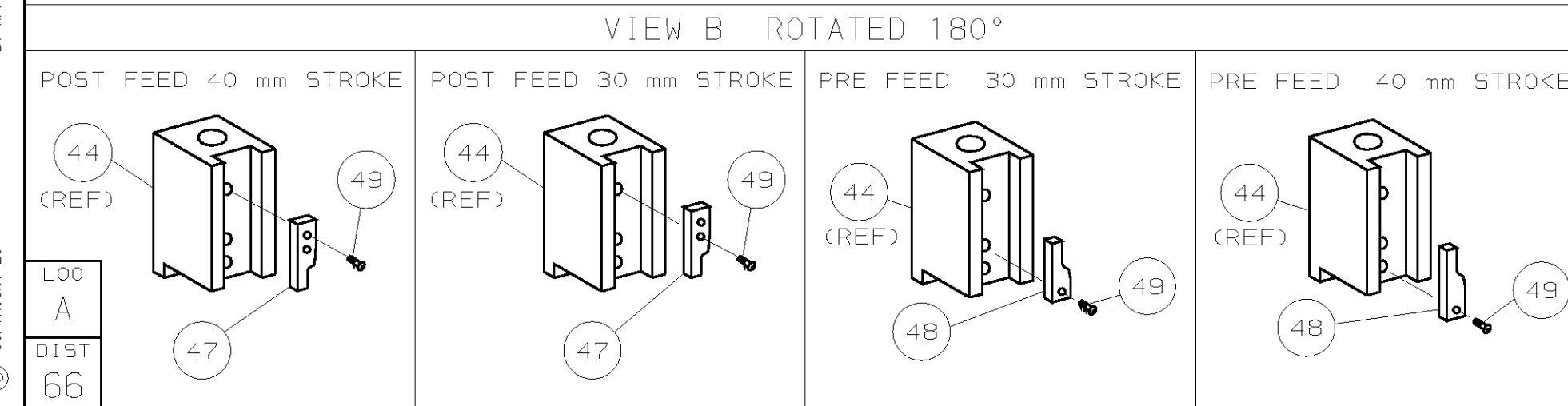
TERMINAL	FEED
APPL SPEC 114-10004	12.70 [.500 IN]

TERMINALS APPLIED				
66424	-	-	-	-
66425	-	-	-	-
-	-	-	-	-
-	-	-	-	-
-	-	-	-	-
-	-	-	-	-
-	-	-	-	-
-	-	-	-	-
-	-	-	-	-
-	-	-	-	-

WIRE SIZE	CRIMP HEIGHT	REF SETTING
mm ² AWG		
26, 28 & 30 AWG	0.94 ±0.05 [.037 ±.002 IN]	D0

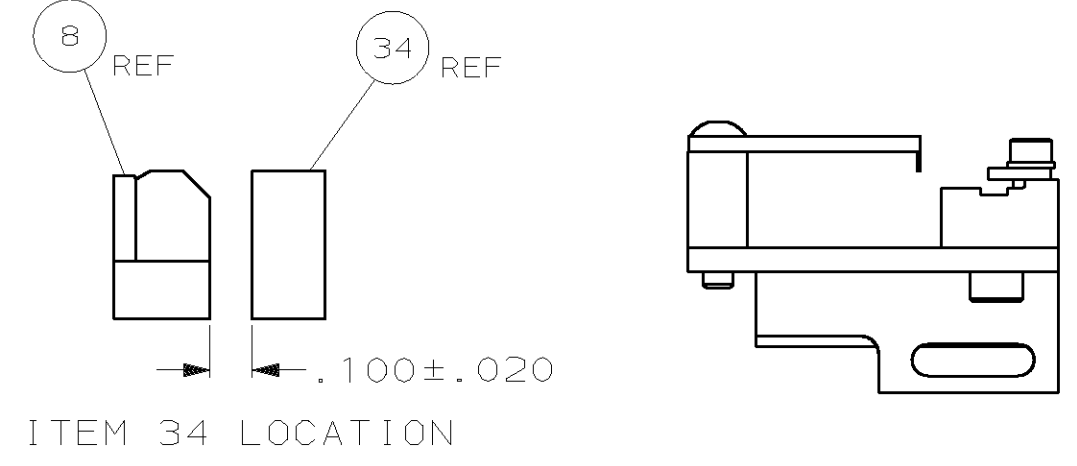


- RECOMMENDED SPARE PARTS.
- 2. GREASE RAM, CAM, CAM FOLLOWER AND FEED ROD LIGHTLY.
- 3. LUBRICATE DAILY PER THE APPLICATOR INSTRUCTION SHEET SUPPLIED WITH THE APPLICATOR.
- CUT TO LENGTH AT ASSY.



*** WARNING:**

ON INSTALLATION, SET WIRE DISC TO LARGEST WIRE SIZE SETTING. USE OF SETTINGS BELOW MIN REQUIRED CRIMP HEIGHT SETTING WILL CAUSE DAMAGE TO CRIMP TOOLING.



QTY	REQD	PER	ASSY	PARTS LIST	DESCRIPTION	ITEM NO			
-	1	1	1	1	1	1	1490525-3	DEPRESSOR, WIRE	73
-	1	1	1	1	1	1	1528401	PRINT, APPLICATOR LOG SHEET	72
-	1	1	1	1	1	1	1338705-3	DOCUMENTATION PACKAGE	71
-	3	3	3	3	3	3	1-23147-4	SPRING, DEPRESSOR	70
-	1	1	1	1	1	1	1490524-1	SPACER, DEPRESSOR	69
-	1	1	1	1	1	1	461264-5	PLATE, IDENTIFICATION	67
-	2	2	2	2	2	2	21017-2	SCR,DRIVE (#2x.19) ID PLATE	66
-	1	1	1	1	1	1	1424350-1	HOLDER, PIN, WIRED	65
-	1	1	1	1	1	1	3-18031-0	SCR,SKT SET (M6X6) RAM	63
-	2	2	2	2	2	2	1-18024-5	SCR,BHC (M5X25) DRAG	61
-	1	1	1	1	1	1	18024-7	SCR,BHC (M4X10) ANVIL	60
-	1	1	1	1	1	1	5-18022-2	SCR,HEX (M4X8) FEED FINGER	59
-	1	1	1	1	1	1	1338685-1	PAWL, FEED	56
-	4	4	4	4	4	4	18024-8	SCR,BHC (M4X12) SHEAR HOLDER	54
-	2	2	2	2	2	2	1-18023-3	SCR,SHC (M4X16) TERM HLD DWN	53
-	1	1	1	1	1	1	18030-1	NUT,HEX (M3) HOLD DOWN	52
-	1	1	1	1	1	1	811242-5	BUMPER, HOLDDOWN	51
-	1	1	1	1	1	1	690753-2	SPACER, TONKER	50
-	1	1	1	1	1	1	18024-3	SCR,BHC (M3X10) CAM	49
-	1	1	1	1	1	1	1338675-1	CAM, PRE FEED 30 & 40 mm ST	48
-	1	1	1	1	1	1	1338676-1	CAM, POST FEED 30 & 40 mm ST	47
-	1	1	1	1	1	1	1320999-3	APPLICATOR BASIC SUBASSY	46
-	1	1	1	1	1	1	690191-1	PLUG, NYLON	45
-	1	1	1	1	1	1	1338660-1	RAM	44
-	1	1	1	1	1	1	2-18024-6	SCR,BHC (M8X25) RAM	41
-	1	1	1	1	1	1	690125-1	SHIM SUBASSY	39
-	1	1	1	1	1	1	469367-8	SPACER, FINE ADJUST	38
-	1	1	1	1	1	1	879103-3	FINE ADJUST HEAD SUBASSY	37
-	1	1	1	1	1	1	1320934-3	SUPPORT, TERMINAL	34
-	2	2	2	2	2	2	1-18024-0	SCR,BHC (M4X20) STRIP GUIDE	33
-	1	1	1	1	1	1	18027-2	WASHER, FLAT (M4)	32
-	1	1	1	1	1	1	1-18023-2	SCR,SKT CAP (M4X12) MOUNT BLOCK	31
-	1	1	1	1	1	1	1320908-4	SPACER, STRIP GUIDE	30
-	1	1	1	1	1	1	1633073-1	STRIP GUIDE PLATE ASSY	29
-	1	1	1	1	1	1	455888-2	SPACER, FRONT SHEAR DEP	28
-	2	2	2	2	2	2	1-22284-0	SPRING, DRAG	27
-	1	1	1	1	1	1	356835-1	LEVER, DRAG RELEASE	26
-	1	1	1	1	1	1	240792-1	DRAG, TERMINAL	25
-	1	1	1	1	1	1	1320928-1	PLATE, STRIP GUIDE	24
-	1	1	1	1	1	1	980371-4	SCR,SHC SHLD	23
-	1	1	1	1	1	1	690472-2	STRIPPER	22
-	1	1	1	1	1	1	1-18023-1	SCR,SHC (M4X10) STRIPPER	21
-	4	4	4	4	4	4	18025-2	WASHER,LOCK (M4) STRIPPER	20
-	1	1	1	1	1	1	1424364-1	STRIPPER	19
-	1	1	1	1	1	1	1338684-1	HOLDER, SHEAR, FRONT (NO-CUT)	17
-	1	1	1	1	1	1	5-22280-0	SPRING, SHEAR	12
-	1	1	1	1	1	1	356885-4	STOP, SHEAR	11
-	1	1	1	1	1	1	1320921-1	HOLDER, SHEAR, FRONT (CUT)	10
-	1	1	1	1	1	1	462006-1	SHEAR, FLOAT (FRONT)	9
-	1	2	2	2	2	2	6-1333202-4	ANVIL	8
-	1	1	1	1	1	1	1-240641-6	SPACER, DEPRESSOR (REAR)	7
-	1	1	1	1	1	1	2-455889-0	DEPRESSOR, SHEAR (FRONT)	5
-	1	1	1	1	1	1	238011-6	SPACER, BLOCK CRIMPER	4
-	1	2	2	2	2	2	2-456135-2	CRIMPER, INSULATION	3
-	1	2	2	2	2	2	1-456403-9	CRIMPER, WIRE	1

DIMENSIONS: mm [INCHES]		MATL	HT	TR	FIN
DO NOT SCALE PRINT.	TOLERANCES UNLESS OTHERWISE SPECIFIED:	DR	25MAY04	APP	25MAY04
1 PLC DEC ±	2 PLC DEC ±	M.CLIFFORD	F.BACKHURST		
3 PLC DEC ±	ANGLES ±	CHK	REL 01-07-04	M.CLIFFORD	
SURF TEXTURE:	REMOVE BURRS, BREAK SHARP EDGES RO.38 MAX	NAME	FINE ADJ SIDE FD HD-I APPL		
SCALE	DWG NO	1528401	MACHINE REF	HD-I APPL	
			SHEET	REV	
			1 OF 1	A	