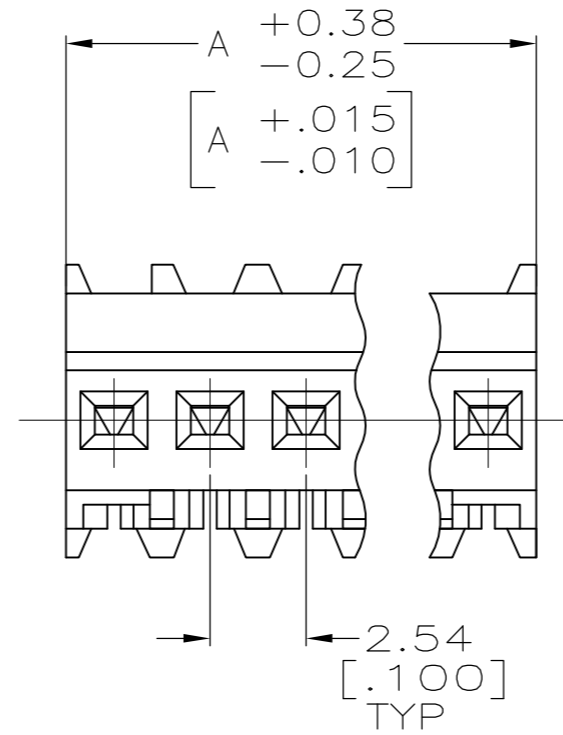
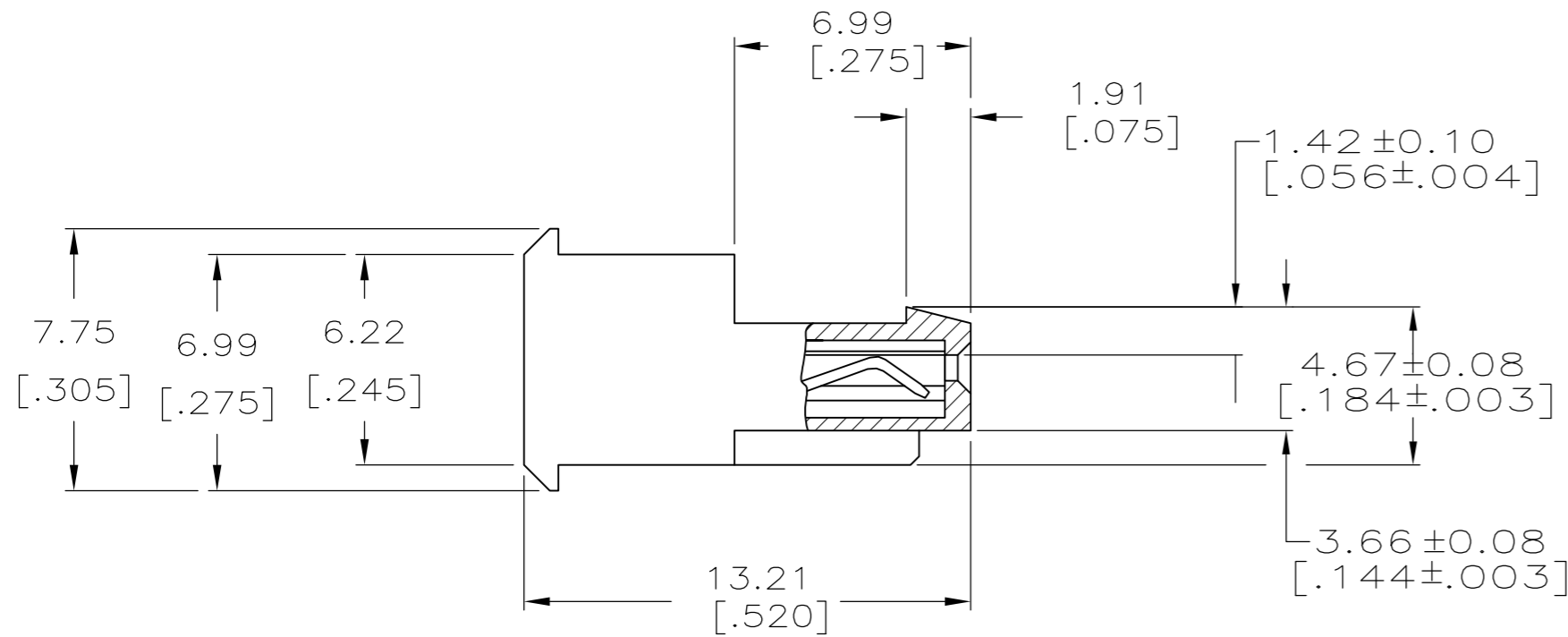
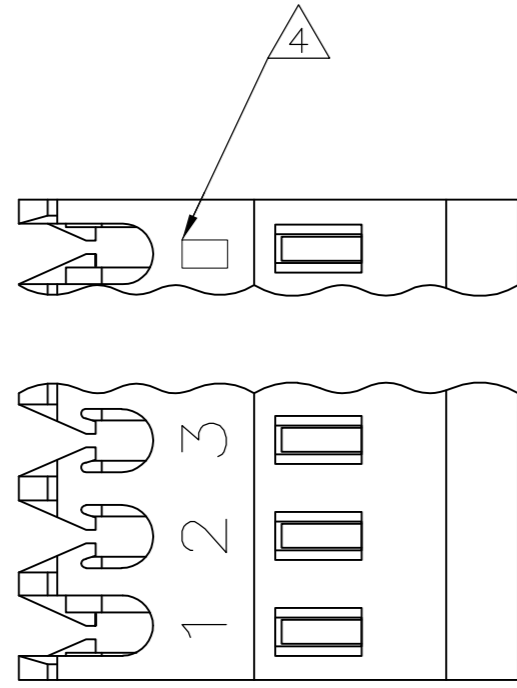


THIS DRAWING IS UNPUBLISHED. RELEASED FOR PUBLICATION  
 © COPYRIGHT BY TYCO ELECTRONICS CORPORATION. ALL RIGHTS RESERVED.

LOC	DIST	REVISIONS					
CM	00	P	LTR	DESCRIPTION	DATE	DWN	APVD
		B		REVISION PER ECO-07-003727	23FEB07	KW	DB
		B1		REVISED PER ECO-09-023313	12OCT09	KK	AEG



LEAD FREE	38.10	[1.500]	15	4-644576-5
	35.56	[1.400]	14	4-644576-4
	33.02	[1.300]	13	4-644576-3
	30.48	[1.200]	12	4-644576-2
	27.94	[1.100]	11	4-644576-1
	25.40	[1.000]	10	4-644576-0
	22.86	[.900]	9	3-644576-9
	20.32	[.800]	8	3-644576-8
	17.78	[.700]	7	3-644576-7
	15.24	[.600]	6	3-644576-6
	12.70	[.500]	5	3-644576-5
	10.16	[.400]	4	3-644576-4
	7.62	[.300]	3	3-644576-3
	5.08	[.200]	2	3-644576-2

CONTAINS LEAD	38.10	[1.500]	15	<del>4-644576-5</del>
	35.56	[1.400]	14	<del>4-644576-4</del>
	33.02	[1.300]	13	<del>4-644576-3</del>
	30.48	[1.200]	12	<del>4-644576-2</del>
	27.94	[1.100]	11	<del>4-644576-1</del>
	25.40	[1.000]	10	<del>4-644576-0</del>
	22.86	[.900]	9	<del>3-644576-9</del>
	20.32	[.800]	8	<del>3-644576-8</del>
	17.78	[.700]	7	<del>3-644576-7</del>
	15.24	[.600]	6	<del>3-644576-6</del>
	12.70	[.500]	5	<del>3-644576-5</del>
	10.16	[.400]	4	<del>3-644576-4</del>
	7.62	[.300]	3	<del>3-644576-3</del>
	5.08	[.200]	2	<del>3-644576-2</del>

7  
SUPERSEDED

△ MATERIAL: CONNECTOR-NYLON UL94V-0 (BLACK).  
 CONTACTS-0.30 [.012] THICK COPPER ALLOY  
 BRIGHT TIN-LEAD 0.00203 [.000080] MIN THICK FOR CONTACTS  
 644576-2 THRU 1-644576-5  
 MATTE WHISKER MITIGATED TIN PLATE 0.00203 [.000080] MIN THICK  
 OVER 0.00076 [.000030] MIN THICK NICKEL FOR CONTACTS  
 3-644576-2 THRU 4-644576-5

2. CONTACTS ACCEPT 24 AWG WIRE WITH 1.52 [.060] MAX INSULATION DIAMETER.

3. CONTACTS MUST ACCEPT 0.64±0.03 [.025±.001] SQUARE POST AND REMAIN LOCKED IN POSITION.

△ IDENTIFICATION NUMBER FOR LAST CIRCUIT MAY NOT APPEAR ON ALL ASSEMBLIES.

5. DIMENSIONS IN BRACKETS ARE IN INCHES.

6. HOUSING FEATURES ARE: FEED THRU WITH LOCKING RAMP.

△ OBSOLETE PARTS: OBSOLETE CIS STREAMLINING PER D.RENAUD/D.SINISI

**METRIC**

THIS DRAWING IS A CONTROLLED DOCUMENT.		DWN S. HOOVER 03-DEC-2004	Tyco Electronics Corporation Harrisburg, Pa 17105-3608	
DIMENSIONS: mm [INCHES]		CHK D. BOSSI 03-DEC-2004	NAME MTA .100 CONNECTOR ASSEMBLY 24 AWG, UL94V-0, SPECIAL	
TOLERANCES UNLESS OTHERWISE SPECIFIED: 0 PLC ± 1 PLC ± 2 PLC ± 0.13 [.005] 3 PLC ± 4 PLC ± ANGLES ± FINISH △		APVD D. BOSSI 03-DEC-2004	PRODUCT SPEC 108-1050 APPLICATION SPEC 114-1019	
MATERIAL △	FINISH △	WEIGHT	SIZE A2	CAGE CODE 00779
CUSTOMER DRAWING		SCALE 5:1	DRAWING NO C=644576	RESTRICTED TO REV B1