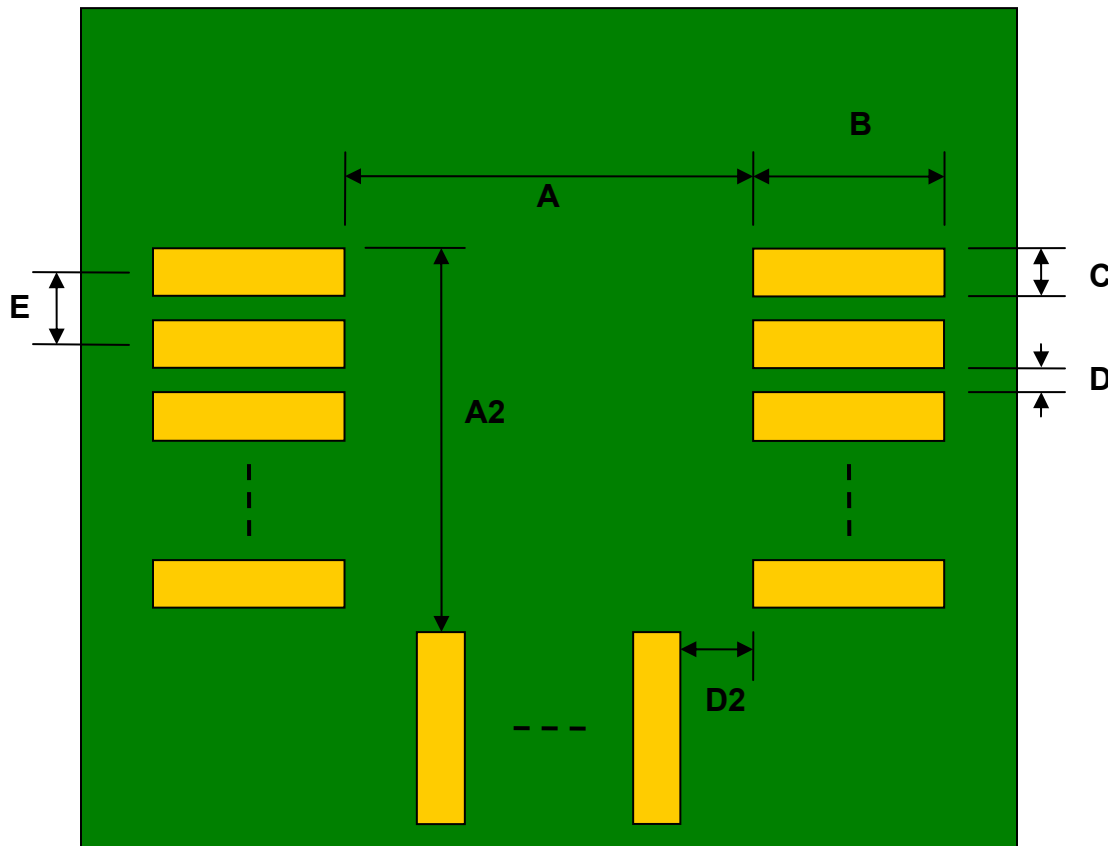


## RN42 to DIP-32 SMT Adapter (1.2 mm pitch, 25.8 x 13.4 mm body)

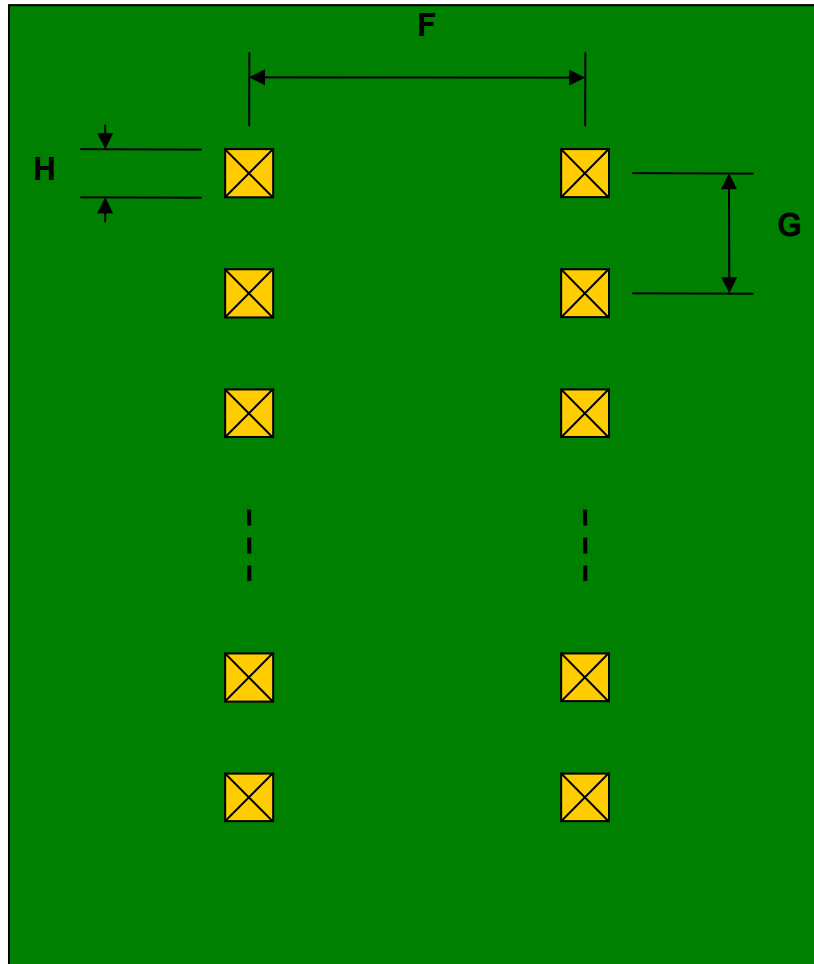
| REF. | DIMENSIONS |       |      |        |       |      |
|------|------------|-------|------|--------|-------|------|
|      | mm         |       |      | inches |       |      |
|      | MIN.       | TYP.  | MAX. | MIN.   | TYP.  | MAX. |
| A    |            | 10.80 |      |        |       |      |
| A2   |            | 15.10 |      |        |       |      |
| B    |            | 2.00  |      |        |       |      |
| C    |            | 0.80  |      |        |       |      |
| D    |            | 0.40  |      |        |       |      |
| D2   |            | 0.90  |      |        |       |      |
| E    |            | 1.20  |      |        |       |      |
| F    |            |       |      |        | 0.600 |      |
| G    |            |       |      |        | 0.100 |      |
| H    |            |       |      |        | 0.025 |      |

Top View (SMT Footprint)



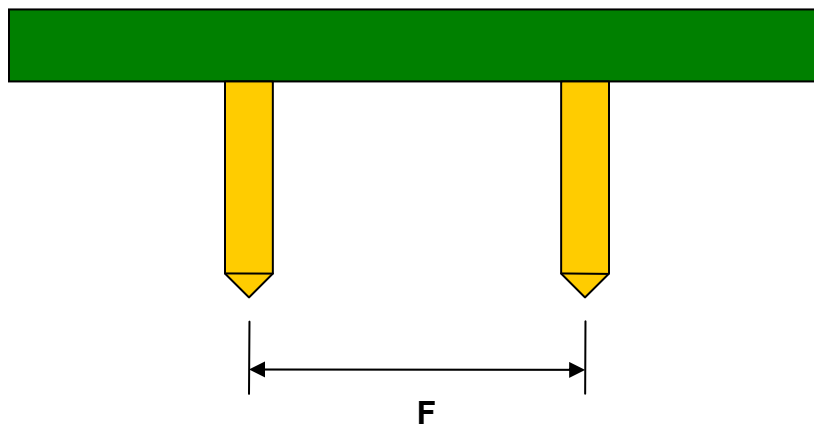
(Representative drawing only - not to scale)

### Bottom View (DIP Pins)



(Representative drawing only - not to scale)

### Side View (DIP Pins)



(Representative drawing only - not to scale)