

PLEASE CHECK WWW.MOLEX.COM FOR LATEST PART INFORMATION

Part Number: [11-40-5302](#)
Status: **Active**
Description: Conductor Anvil

Documents:
[RoHS Certificate of Compliance \(PDF\)](#)

General

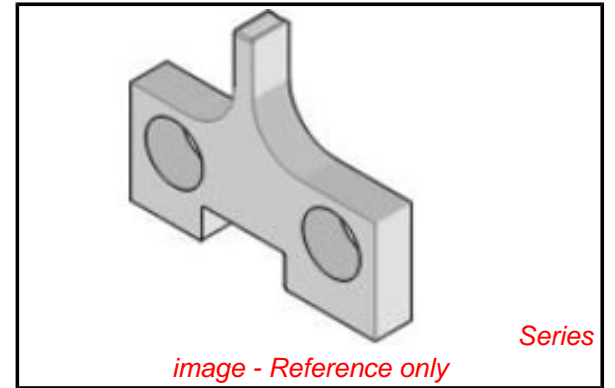
| | |
|--------------------------------|--|
| Product Family | Application Tooling |
| Series | T1719 |
| Comments | See Tooling Specification (PDF) Above |
| Function | Cutter |
| Geographic Area | Global |
| Level of Automation | Semi-Automatic |
| More Detailed Tech Information | applicationtooling@molex.com |
| Product Name | N/A |
| Survey | www.molex.com//review/apptool_survey.html |
| Tool Type | Anvil |
| UPC | 800754213288 |

Material Info

Old Part Number 8342-2

Reference - Drawing Numbers

Application Tooling Documents [ATS-STANDARD-PARTS](#)



EU RoHS **China RoHS**

Compliance Status

Not Reviewed

REACH SVHC

Not Reviewed

Low-Halogen Status

Not Reviewed

Need more information on product environmental compliance?

Email productcompliance@molex.com
 For a multiple part number RoHS Certificate of Compliance, [click here](#)

Please visit the [Contact Us](#) section for any non-product compliance questions.

Search Parts in this Series

T1719Series

Use With

11-40-2089 , 11-40-3257